

A hand is holding a white, 3D-printed lattice structure, which is a square plate with a complex, interconnected internal pattern. To the left, a laptop screen shows a 3D model of this same lattice structure in a software interface. The background is a solid blue color.

THE RELATION BETWEEN DIGITAL MANUFACTURING AND BLOCKCHAIN

BY JACK NIKOGOSIAN

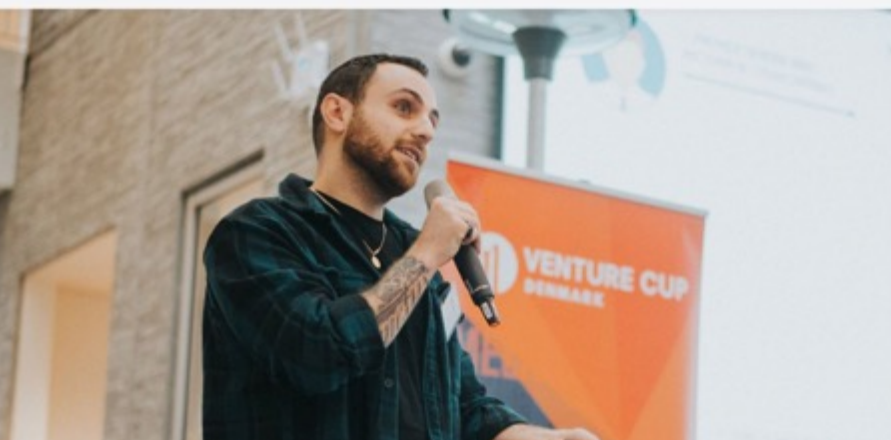
DANSK AM
SUMMIT





ERHVERV

Dansk startup med "Bitcoin Jack" i
spidsen vil lave verdens foretrukne
betalingsmetode

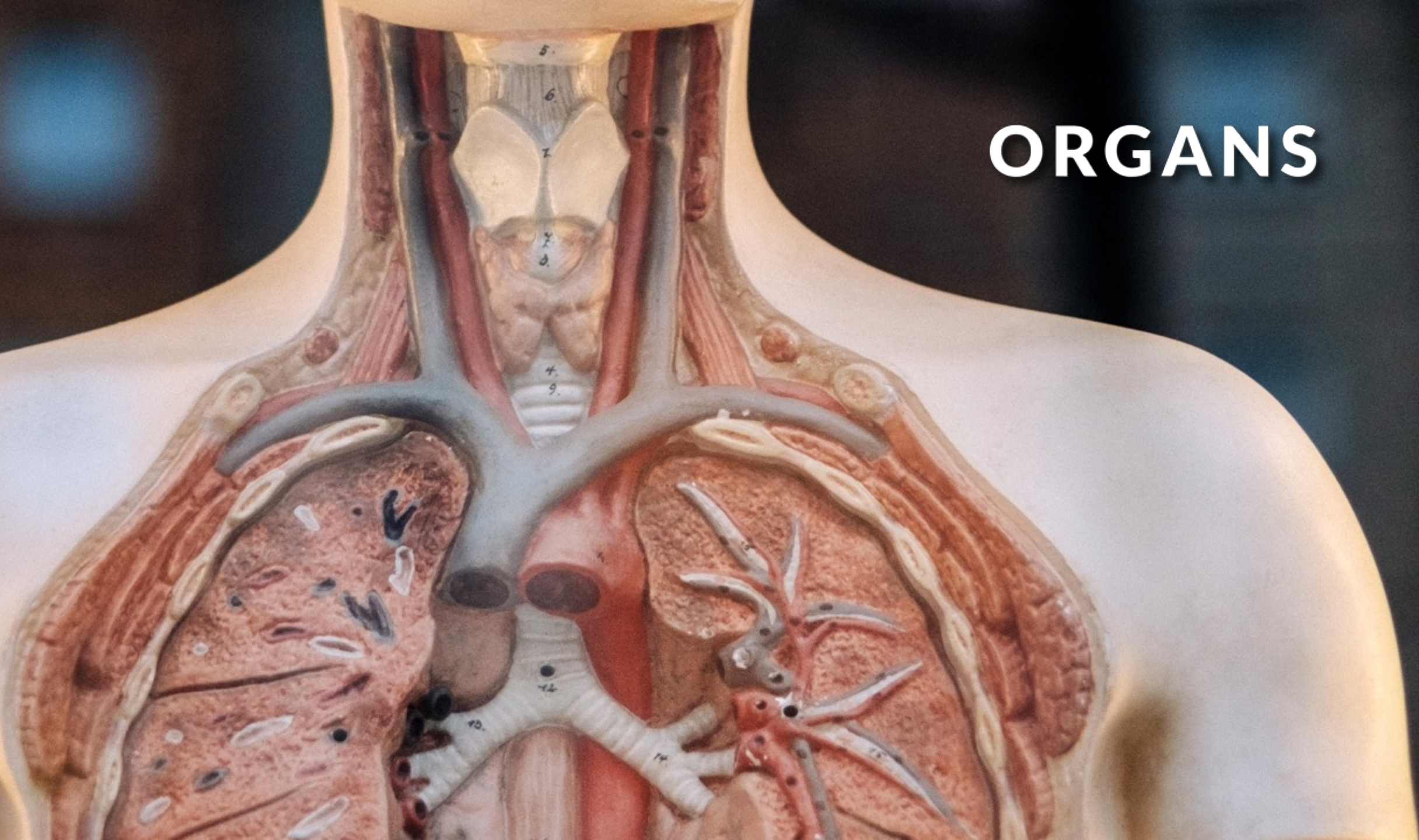


LEGO MAN



WHAT ADDITIVE MANUFACTURING IS BECOMING

ORGANS





MEDICINE

4.0

SMART (ON-DEMAND) MANUFACTURING

3D PRINTING PARTS

TOKENIZING PATENTS FOR PARTS

EARN MONEY BY LICENSING THE PATENTS

SPARE PARTS

SOFTWARE AS A PRODUCT



THANK YOU!

 JACK NIKOGOSIAN
 JN@ARYZE.IO

FOLLOW US
@ARYZEOFFICIAL



ARYZE.IO

 Join our Telegram
LIVE CHAT

T.ME/ARYZE